

THE EDRIDGE

FLOOR NUMBER 10

APARTMENT 73
ONE BEDROOM
AREA = 487 Square Foot
Aspect = London/Kent

APARTMENT 74
TWO BEDROOM
AREA = 924 Square Foot
Aspect = South Downs/Kent

APARTMENT 75
TWO BEDROOM
AREA = 791 Square Foot
Aspect = South Downs/ Surrey

APARTMENT 76
ONE BEDROOM
AREA = 554 Square Foot
Aspect = London/Surrey

APARTMENT 77
ONE BEDROOM
AREA = 498 Square Foot
Aspect = London/Kent



VIEW - SOUTH FACING - SOUTH DOWNS

VIEW - NORTH FACING - LONDON

VIEW - EAST FACING - KENT COUNTY

VIEW - WEST FACING - SURREY COUNTY

SECTION AA



THE EDRIDGE

FLOOR NUMBER 11

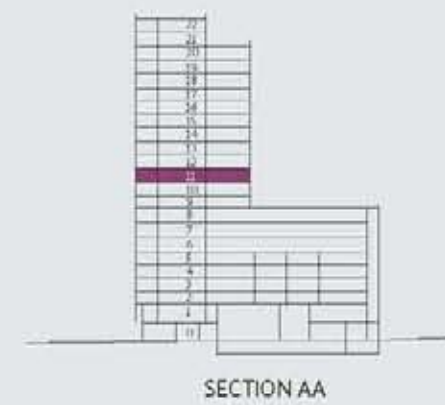
APARTMENT 78
ONE BEDROOM
AREA = 487 Square Foot
Aspect = London/Kent

APARTMENT 79
TWO BEDROOM
AREA = 924 Square Foot
Aspect = South Downs/Kent

APARTMENT 80
TWO BEDROOM
AREA = 791 Square Foot
Aspect = South Downs/ Surrey

APARTMENT 81
ONE BEDROOM
AREA = 554 Square Foot
Aspect = London/Surrey

APARTMENT 82
ONE BEDROOM
AREA = 498 Square Foot
Aspect = London/Kent



SECTION AA

VIEW - EAST FACING - KENT COUNTY



VIEW - NORTH FACING - LONDON



VIEW - SOUTH FACING - SOUTH DOWNS



VIEW - WEST FACING - SURREY COUNTY



THE EDRIDGE

FLOOR NUMBER 12

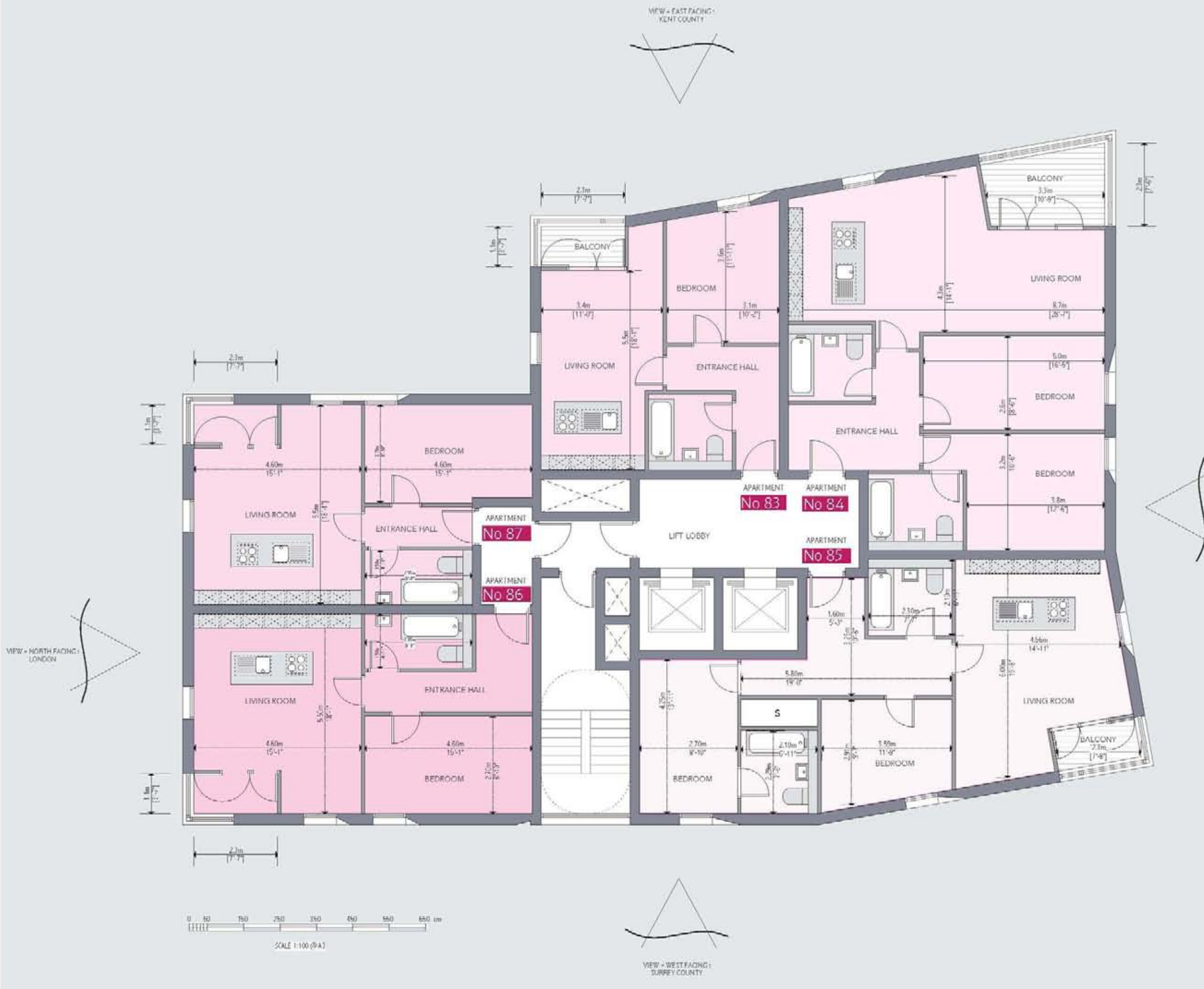
APARTMENT 83
ONE BEDROOM
AREA = 487 Square Foot
Aspect = London/Kent

APARTMENT 84
TWO BEDROOM
AREA = 924 Square Foot
Aspect = South Downs/Kent

APARTMENT 85
TWO BEDROOM
AREA = 791 Square Foot
Aspect = South Downs/ Surrey

APARTMENT 86
ONE BEDROOM
AREA = 554 Square Foot
Aspect = London/Surrey

APARTMENT 87
ONE BEDROOM
AREA = 498 Square Foot
Aspect = London/Kent



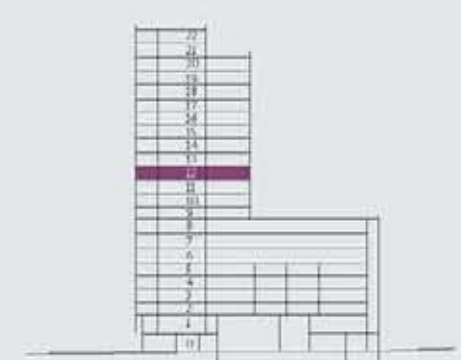
2.3m [7'-7"]

5.0m [16'-5"]

3.8m [12'-6"]

4.5m [14'-11"]

2.3m [7'-8"]



SECTION AA

0 50 100 150 200 250 300 350 400 450 500 550 600 650 mm
SCALE 1:100 (9A1)

VIEW - WEST FACING - SURREY COUNTY

THE EDRIDGE

FLOOR NUMBER 13

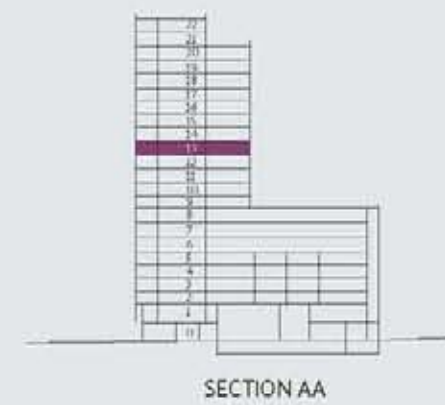
APARTMENT 88
ONE BEDROOM
AREA = 487 Square Foot
Aspect = London/Kent

APARTMENT 89
TWO BEDROOM
AREA = 924 Square Foot
Aspect = South Downs/Kent

APARTMENT 90
TWO BEDROOM
AREA = 791 Square Foot
Aspect = South Downs/ Surrey

APARTMENT 91
ONE BEDROOM
AREA = 554 Square Foot
Aspect = London/Surrey

APARTMENT 92
ONE BEDROOM
AREA = 498 Square Foot
Aspect = London/Kent



SECTION AA

THE EDRIDGE

FLOOR NUMBER 14

APARTMENT 93
ONE BEDROOM
AREA = 487 Square Foot
Aspect = London/Kent

APARTMENT 94
TWO BEDROOM
AREA = 924 Square Foot
Aspect = South Downs/Kent

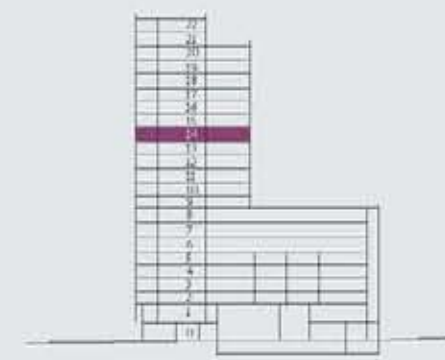
APARTMENT 95
TWO BEDROOM
AREA = 791 Square Foot
Aspect = South Downs/ Surrey

APARTMENT 96
ONE BEDROOM
AREA = 554 Square Foot
Aspect = London/Surrey

APARTMENT 97
ONE BEDROOM
AREA = 498 Square Foot
Aspect = London/Kent



VIEW - SOUTH FACING - SOUTH DOWNS



SECTION AA



VIEW - WEST FACING - SURREY COUNTY

THE EDRIDGE

FLOOR NUMBER 15

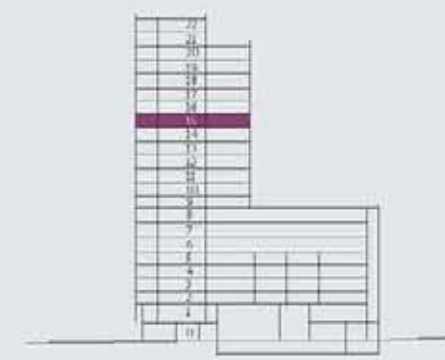
APARTMENT 98
ONE BEDROOM
AREA = 487 Square Foot
Aspect = London/Kent

APARTMENT 99
TWO BEDROOM
AREA = 924 Square Foot
Aspect = South Downs/Kent

APARTMENT 100
TWO BEDROOM
AREA = 791 Square Foot
Aspect = South Downs/ Surrey

APARTMENT 101
ONE BEDROOM
AREA = 554 Square Foot
Aspect = London/Surrey

APARTMENT 102
ONE BEDROOM
AREA = 498 Square Foot
Aspect = London/Kent



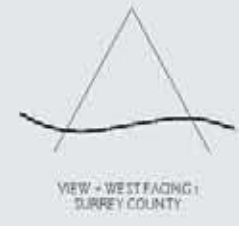
SECTION AA



VIEW - NORTH FACING - LONDON



VIEW - EAST FACING - KENT COUNTY



VIEW - WEST FACING - SURREY COUNTY

THE EDRIDGE

FLOOR NUMBER 16

APARTMENT 103
ONE BEDROOM
AREA = 487 Square Foot
Aspect = London/Kent

APARTMENT 104
TWO BEDROOM
AREA = 924 Square Foot
Aspect = South Downs/Kent

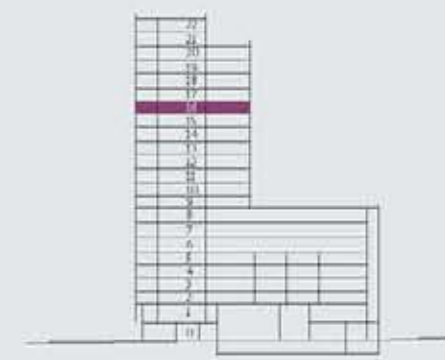
APARTMENT 105
TWO BEDROOM
AREA = 791 Square Foot
Aspect = South Downs/ Surrey

APARTMENT 106
ONE BEDROOM
AREA = 554 Square Foot
Aspect = London/Surrey

APARTMENT 107
ONE BEDROOM
AREA = 498 Square Foot
Aspect = London/Kent



VIEW - SOUTH FACING - SOUTH DOWNS



THE EDRIDGE

FLOOR NUMBER 17

APARTMENT 108
ONE BEDROOM
AREA = 487 Square Foot
Aspect = London/Kent

APARTMENT 109
TWO BEDROOM
AREA = 924 Square Foot
Aspect = South Downs/Kent

APARTMENT 110
TWO BEDROOM
AREA = 791 Square Foot
Aspect = South Downs/ Surrey

APARTMENT 111
ONE BEDROOM
AREA = 554 Square Foot
Aspect = London/Surrey

APARTMENT 112
ONE BEDROOM
AREA = 498 Square Foot
Aspect = London/Kent

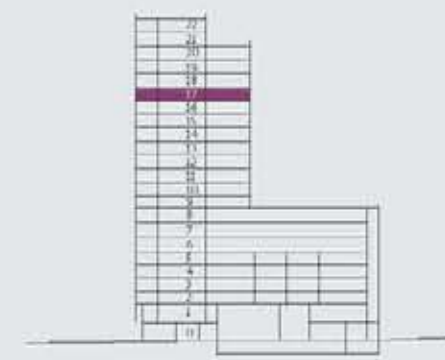


VIEW - SOUTH FACING - SOUTH DOWNS

VIEW - NORTH FACING - LONDON

VIEW - EAST FACING - KENT COUNTY

VIEW - WEST FACING - SURREY COUNTY



THE EDRIDGE

FLOOR NUMBER 18

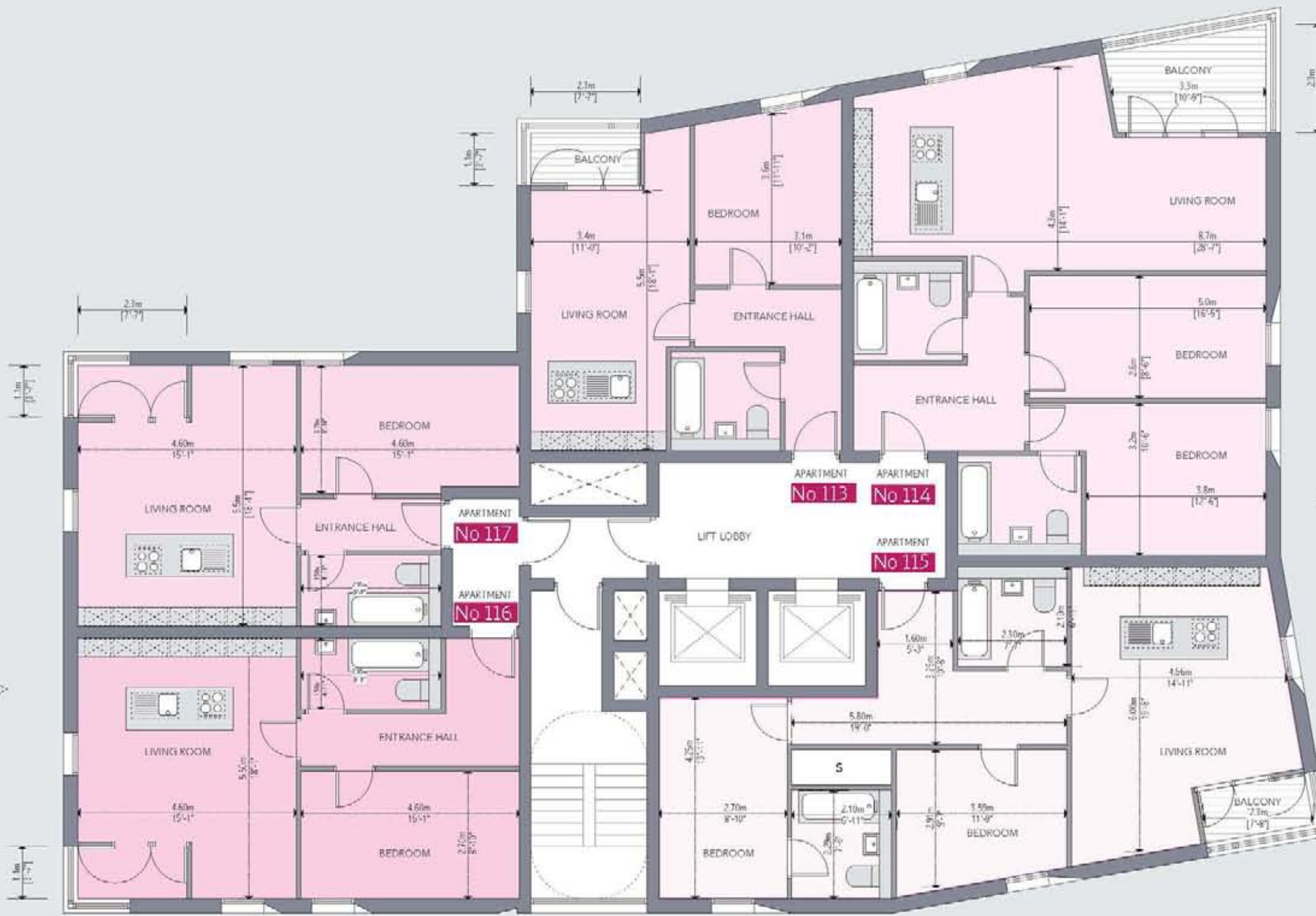
APARTMENT 113
ONE BEDROOM
AREA = 487 Square Foot
Aspect = London/Kent

APARTMENT 114
TWO BEDROOM
AREA = 924 Square Foot
Aspect = South Downs/Kent

APARTMENT 115
TWO BEDROOM
AREA = 791 Square Foot
Aspect = South Downs/ Surrey

APARTMENT 116
ONE BEDROOM
AREA = 554 Square Foot
Aspect = London/Surrey

APARTMENT 117
ONE BEDROOM
AREA = 498 Square Foot
Aspect = London/Kent



VIEW - EAST FACING - KENT COUNTY



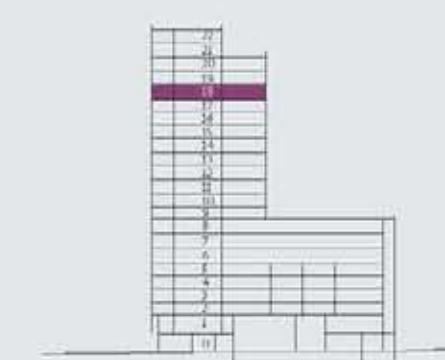
VIEW - SOUTH FACING - SOUTH DOWNS



VIEW - NORTH FACING - LONDON



VIEW - WEST FACING - SURREY COUNTY



SECTION AA

THE EDRIDGE

FLOOR NUMBER 19

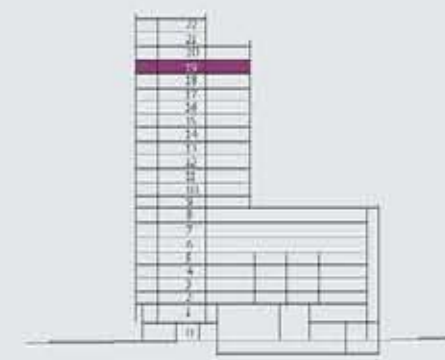
APARTMENT 118
ONE BEDROOM
AREA = 487 Square Foot
Aspect = London/Kent

APARTMENT 119
TWO BEDROOM
AREA = 924 Square Foot
Aspect = South Downs/Kent

APARTMENT 120
TWO BEDROOM
AREA = 791 Square Foot
Aspect = South Downs/ Surrey

APARTMENT 121
ONE BEDROOM
AREA = 554 Square Foot
Aspect = London/Surrey

APARTMENT 122
ONE BEDROOM
AREA = 498 Square Foot
Aspect = London/Kent



THE EDRIDGE

FLOOR NUMBER 20

VIEW - EAST FACING -
KENT COUNTY



APARTMENT 123
ONE BEDROOM
AREA = 487 Square Foot
Aspect = London/Kent

APARTMENT 124
TWO BEDROOM
AREA = 924 Square Foot
Aspect = South Downs/Kent

APARTMENT 125
TWO BEDROOM
AREA = 791 Square Foot
Aspect = South Downs/ Surrey

APARTMENT 126
ONE BEDROOM
AREA = 554 Square Foot
Aspect = London/Surrey

APARTMENT 127
ONE BEDROOM
AREA = 498 Square Foot
Aspect = London/Kent



VIEW - SOUTH FACING -
SOUTH DOWNS



VIEW - NORTH FACING -
LONDON



VIEW - WEST FACING -
SURREY COUNTY



SCALE 1:100 @ A3



SECTION AA

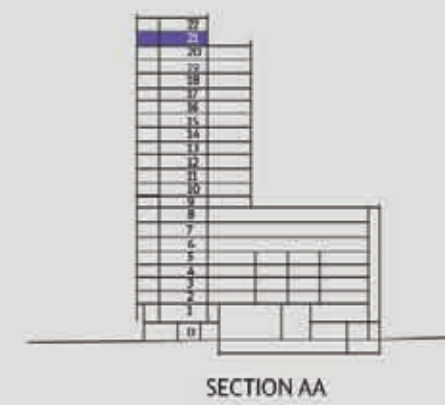
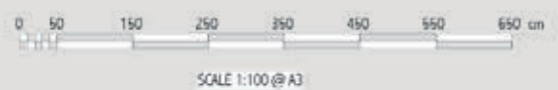
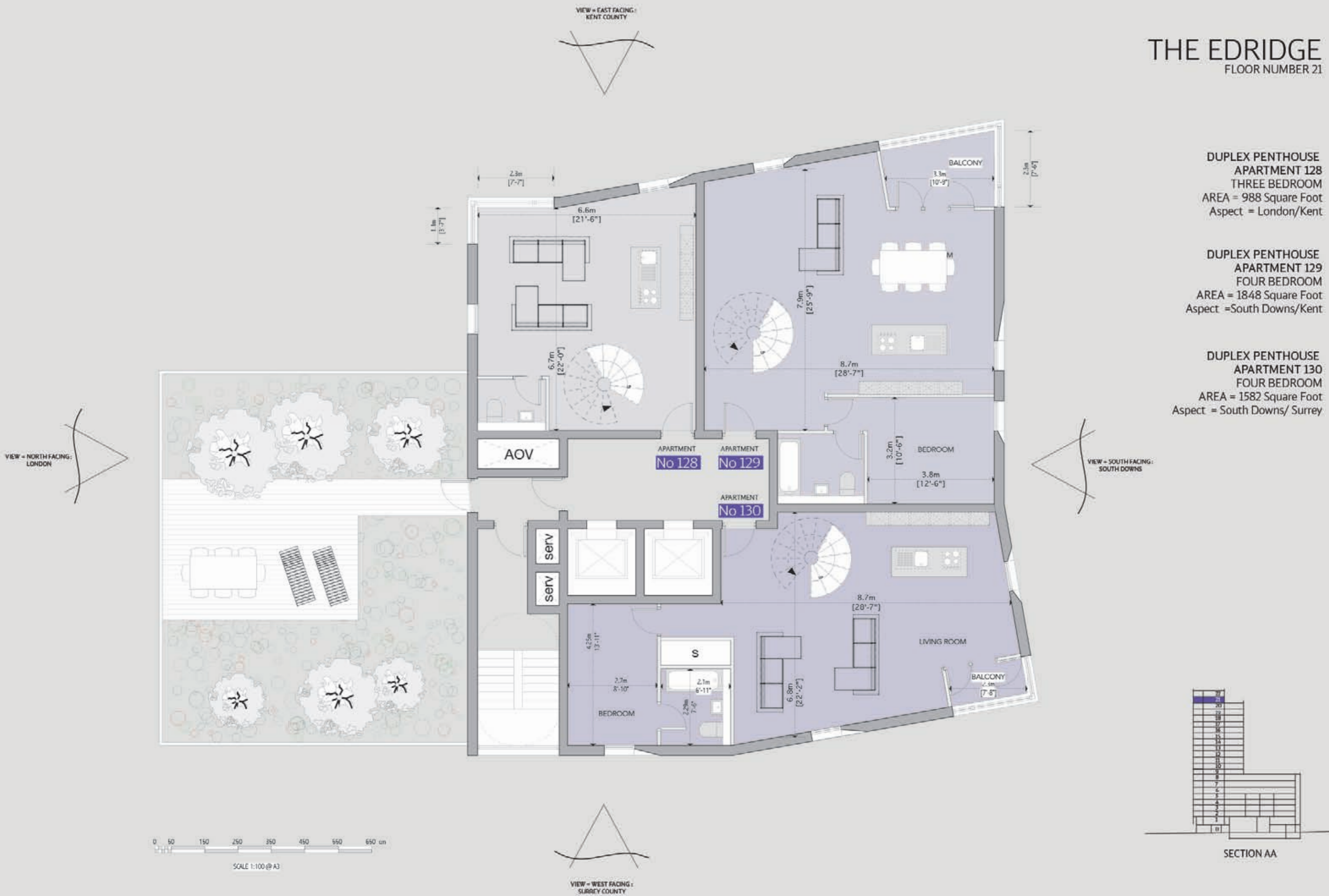
THE EDRIDGE

FLOOR NUMBER 21

**DUPLEX PENTHOUSE
APARTMENT 128**
THREE BEDROOM
AREA = 988 Square Foot
Aspect = London/Kent

**DUPLEX PENTHOUSE
APARTMENT 129**
FOUR BEDROOM
AREA = 1848 Square Foot
Aspect = South Downs/Kent

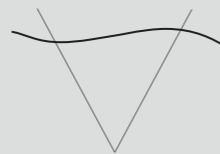
**DUPLEX PENTHOUSE
APARTMENT 130**
FOUR BEDROOM
AREA = 1582 Square Foot
Aspect = South Downs/ Surrey



THE EDRIDGE

FLOOR NUMBER 22 PENTHOUSES

VIEW = EAST FACING :
KENT COUNTY



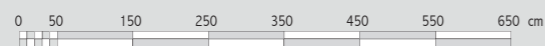
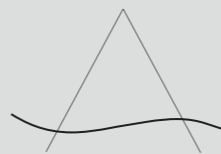
VIEW = NORTH FACING :
LONDON



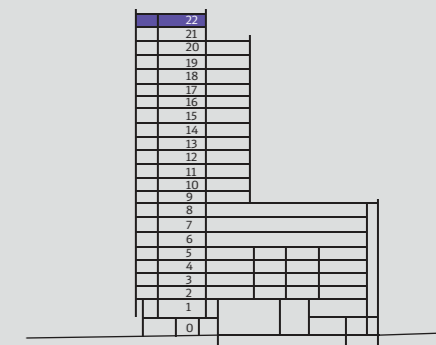
VIEW = SOUTH FACING :
SOUTH DOWNS



VIEW = WEST FACING :
SURREY COUNTY



SCALE 1:100 @ A3



SECTION AA